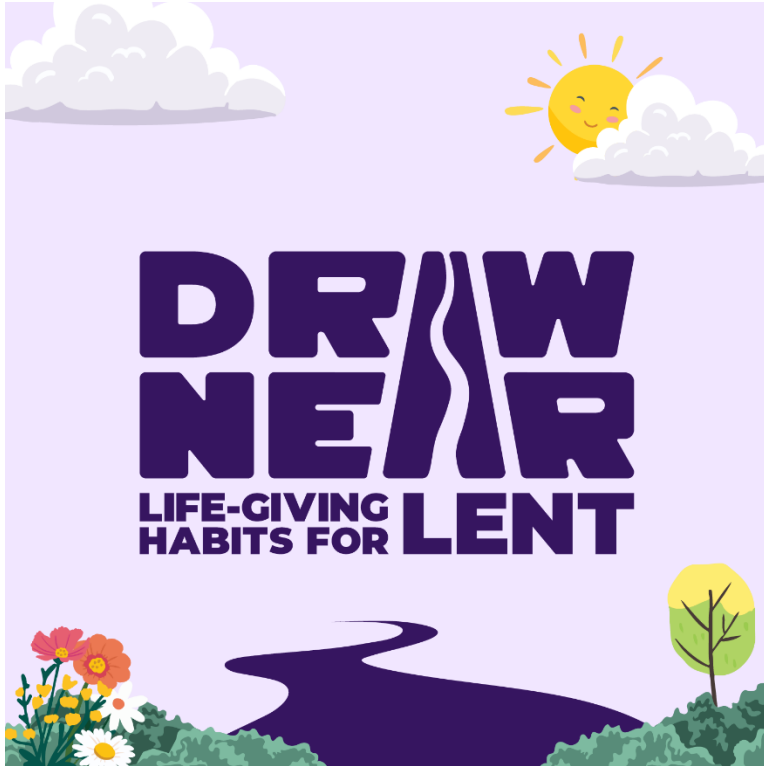


**Christ Church Walmersley  
and  
St John with St Mark Bury**



**The Church of England on Walmersley Road**

**February 2026**



**THE CHURCH  
OF ENGLAND**  
Diocese of Manchester

**CHURCH  
FOR A  
DIFFERENT  
WORLD**



THANK YOU  
We loved our angels,  
they are beautiful!  
Lots of love from  
all of the Nursery children  
at St John with St Mark  
CE Primary xxxx

*read more at page 13*

# CAMPFIRE CHURCH

Join us around the campfire for  
relaxed, informal family worship

**4th Tuesdays @ 6.30pm**

[CCWalmersleyBury.org.uk/campfire](http://CCWalmersleyBury.org.uk/campfire)



Campfire Church now has a regular monthly slot.  
If the weather is atrocious, we do migrate into the Church Hall.  
So why not come along and give it a try?  
Next one: 24<sup>th</sup> February

## *Light, Love – and Ashes*

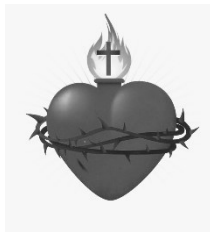
---

This month in the Church year feels unusually crowded. Candlemas, Ash Wednesday and the beginning of Lent arrive close together, pressing different kinds of meaning into a short stretch of time. And then we have Valentine's Day too! Light, love and loss stand side by side. And perhaps that is not accidental.

Candlemas marks the moment when the light that arrived at Christmas is carried into the wider world. Simeon takes the child Jesus in his arms and blesses God, speaking honestly of joy and pain held together. "*A light to lighten the nations,*" he says - and in the next breath warns Mary of sorrow. Candlemas reminds us that light does not banish darkness by denying it, but by entering it.

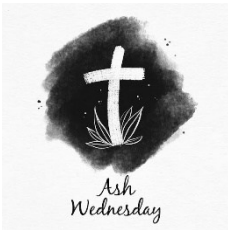


Almost immediately, Ash Wednesday follows. The priest traces a cross of ash on our foreheads and speaks words we would rather avoid: "*Remember that you are dust.*" It is a stark movement, from candlelight to ashes, but it is truthful. Lent does not undo Candlemas; it deepens it. The light we carry is not fragile because we are mortal; it matters because we are.



It may seem odd to bring in Valentine's Day, which is so often reduced to sentimentality, but it rightfully belongs in this conversation. Beneath the cards and roses is a longing to be known and loved. Lent asks what kind of love we are offering and receiving. Is it love that consumes and discards, or love that stays, forgives and tells the truth? Ashes strip away illusion, not affection. They remind us that love worthy of the name will always be costly.

The beginning of Lent is not about self-improvement, but about attention. Attention to God, to one another and to ourselves as we truly are. The disciplines of Lent - prayer, fasting and generosity - are not



punishments, but practices that clear space for love to grow more honestly. They teach us how to carry the light of Candlemas through the wilderness without trying to control it.

These days offer a kind of wisdom. Love without truth becomes shallow; truth without love becomes unbearable. Candlemas shows us light that both blesses and wounds. Ash Wednesday teaches us humility without despair. Valentine's Day reminds us that the heart still longs, even when it is fragile.

Held together, we learn that love and vulnerability are not opposites. Candlemas light, Lenten ashes and Valentine's longing all speak of a God who draws near in weakness.

Perhaps the invitation is simple: to carry the light gently, to love faithfully and to hold one another with care - trusting that even in illness and uncertainty, God is at work through us, where we are needed most.

Ian

*"Lord, now You are letting Your servant depart in peace,  
according to Your word; for my eyes have seen Your salvation  
which You have prepared before the face of all peoples,  
a light to bring revelation to the Gentiles,  
and the glory of Your people Israel."*

Luke 2.29-32



**BAPTISM**

Nov 23      Issac Stuart Morris Walton-Nixon  
Dec 7        Bonnie Anne Brayshaw  
                Jack Brayshaw

*"In the name of the Father, and the Son and the Holy Spirit....."*

**MARRIAGE**

Jan 16        Samuel Taylor and Rebecca Lee

*"those whom God has joined together let no one put asunder"*

**FUNERALS IN CHURCH**

Nov 21        Thomas Walker  
Jan 21        Elizabeth (Ella) Turner

*"I am the resurrection and the life....."*



---

**Ash Wednesday Services - 18<sup>th</sup> February**

10am at St John with St Mark

7.30pm at Christ Church Walmersley

Services to mark the beginning of Lent as we remember  
the 40 days Jesus spent in the wilderness  
in preparation for his public ministry.  
A day of penitence to cleanse the soul  
at the beginning of this important season.



## ***BIBLE READINGS***

---

Feb 1	<b>Presentation of Christ in the Temple</b>		
	Malachi 3: 1-5	Hebrews 2: 14-18	Luke 2: 22-40
Feb 8	<b>2nd Sunday before Lent</b>		
	Genesis 1.1-2.3	Romans 8.18-25	Matthew 6.25-end
Feb 15	<b>Sunday next before Lent</b>		
	Exodus 24.12-end	2 Peter 1.16-end	Matthew 17.1-9
Feb 22	<b>1st Sunday of Lent</b>		
	Genesis 2.15-17; 3.1-7	Romans 5.12-19	Matthew 4.1-11
Mar 1	<b>2nd Sunday of Lent</b>		
	Genesis 12.1-4a	Romans 4.1-5, 13-17	John 3.1-17

## ***Flowers in church***

---

At Christ Church

Feb 1      In memory of Mr and Mrs Barcroft Wolstenholme

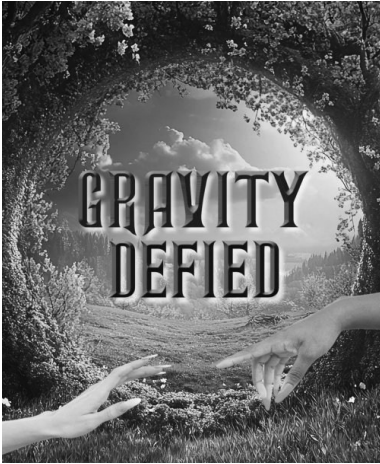
Feb 8      Vacant

There will be no flowers in church during Lent.

If you would like to donate towards the cost of the flowers in church for a specific week, perhaps in memory of a loved one or in celebration of a special event, please speak to Hazel Bamford (Christ Church) or Rosemarie Ashworth (St John with St Mark).

## ***A Lent Course based on the movie "WICKED"***

---



The focus for our study this Lent will be Archdeacon Rachel's book 'Gravity Defied'. This is a 5 week course based on 'Wicked', the BAFTA award-winning movie, and should be an inspiring and original Lent course that will be ideal for both group and individual study.

The course explores a number of themes relevant to each of us in the contemporary world. These include recognising what is good and right, and standing up for it even when mocked, the

temptations of success, popularity and respectability, and the importance of friendship and solidarity. All is discussed within the context of Jesus's ministry recorded in the Gospels, the temptations and threats that he faced, and persecution of those who followed him.

For convenience we have ordered some copies of the book which are available for £7 from David Robinson or Barbara Taylor, but it is available from various platforms if you prefer to order your own.

We shall meet for 5 weeks, beginning Tuesday, 24 February, at 7.30pm in the Barritt Room, Parkinson Street. (As we go to press we are exploring a showing of the movie for those who have not seen it.)

Not been to a previous study group? Do not be afraid! Everyone is welcome: some have more to say than others, some like to listen and take ideas away to ponder, so there is no pressure. Also, please don't feel that if you can't come every week you can't take part, as each week will focus on a different aspect:

"No One Mourns the Wicked", "What is this Feeling?", "Dancing through Life", "Popular", "Defying Gravity".

Hope to see you there.

**Summary of a meeting of Christ Church Walmersley PCC on 13<sup>th</sup> January**

- The meeting opened with prayers led by Jennifer Wood.
- The Community Survey was discussed. There have been fewer responses than hoped and it was agreed that encouragement to complete the short survey should begin with the congregation.
- The financial report was discussed in a positive light.
- It was agreed to look at the position regarding faculties for a significant number of gravestones which are leaning or have fallen so they can be made secure. Also to replace panes on the east and west clock faces.
- The Christmas Tree Festival was reviewed and a number of events suggested for 2026 which will be planned into the calendar shortly.
- The quinquennial inspection\* report has been received and has been circulated in full to all PCC members. Members were asked to consider which of the most urgent items can be reasonably achieved, either at relatively low cost or with volunteer 'labour'. Until we are able to determine the future of our buildings many recommendations will have to remain as such.
- PCC approval was granted for two names to be put forward as eucharistic assistants.
- The date of the next meeting will be 24<sup>th</sup> February at 7.30pm.
- The meeting closed at 9.15pm with the Grace.

*\* Every five years, every church building must be inspected by a suitably experienced and qualified professional. The report helps the parish to ensure the building is kept in good repair, prioritising needs.*

---

**Summary of St. John with St. Mark PCC meeting of 15th January**

- All services are now covered until the end of April. We have had to change the 1st February Candlemas service to Service of the Word as there is no Priest available. It was noted that due to illness across the Mission Community, some of our regular Priests were being pulled back to their own Churches. There was an update via Sally on the latest with Harvie's health.
- Outstanding DBS checks for PCC members are being done with Joan Wild on Monday 19th January in the hall.
- There was an update on Mission Community activities. A meeting is scheduled for Monday 26th January when more details for 2026 events are to be given. We have agreed that our hall can host the quiz night again on Friday 18th September.
- No update on the Quinquennial inspection at this time.
- Alan Thew is now the new foundation governor at St. John with St. Mark and has recently met the rest of the governors. Thanks to Alan for taking up this role.
- Acknowledgment letters have started to come in from some of the charities we supported as part of our annual giving.
- The Christmas Fair raised £1577.00; The total amount given to Bury Cancer Support Centre from the Christmas giving was £400.00; It was noted that we are currently up to date with our Parish share.
- Ian shared with us the draft accounts for 2025 and there was a discussion. Ian was thanked for his hard work and the accounts will now be passed for Independent Examination.
- June and Rosemarie attended a warden's meeting on 10th January and they shared with us some of the topics. There was also a discussion surrounding the magazine as the production costs are increasing. There was a thought we needed to reduce the number of copies at St. John with St. Mark as we are not selling as many but it was also acknowledged that the magazine can provide a form of outreach.
- The pads have now been replaced in the defibrillator.
- A coffee morning has been booked for Saturday 28th February.
- Next PCC meeting is Thursday 26th February at 8.00pm and the APCM is planned for Sunday 12th April after the main service.

- \* Thank you to all clergy and ministers who led worship during Advent and Christmas to ensure all our expected services continued, and to all who attended, many of whom were visitors.
- \* The collection throughout the Christmas period for Bury Cancer Support Centre at St. John with St. Mark, which was donated in various ways, made £400.00. Thank you to everyone who contributed.
- \* A special evening of prayer and reflection is being led by the Archbishop of York in Manchester Cathedral on Thursday, 19th March. Open to everyone, this should be an inspiring evening that will focus on The Lord's Prayer, bringing together people from across the diocese to explore its meaning in our lives today.
- \* Let us know if you are aware of anyone who may be interested in joining (or being involved with) a youth group drawn from the ten churches across our Mission Community. This is in the very early stages of exploring interest, so simply looking at potential involvement. Please speak to one of the Wardens who will pass on any information.
- \* Eagles Wing continues to operate as a mutual support group made up of local people, asylum seekers and refugees living in Bury. It welcomes people of all ages, nationality and ability. It has no paid staff and members help to run groups. It celebrates each other's cultures and good fortune and helps when there are problems. If you are interested visit the Bury United Reformed Church in Parsons Lane, every Monday, Tuesday and Thursday from 10 am – 12 noon.
- \* The Church of England Lent theme for 2026 is 'Draw Near for Lent' focussing on habits and patterns to help us grow as Disciples of Christ and there is plenty of material on the CofE website. There are a very small number of paper themed booklets with a reflection for each day of Lent available from David Robinson. Please have a word if you would like one.

\* The Real Easter Egg: do not leave it too late to order yours. These eggs are no longer on sale in supermarkets. This is because with the additional costs of including the Easter Story in each egg and using Fairtrade chocolate, it is not possible to compete with the bigger brands for shelf space. There is information available in our churches or online. Please consider going the extra mile and buying Real Easter Eggs. In the past 12 years, over £460,000 has been donated to charitable projects with Fairtrade Premium fees paid to farmers allowing them to buy everything from school books and solar panels to providing fresh water.

\* Particularly for those who appreciated the drama "Ruth" we hosted last year, or "Control" which was presented at Mothers' Union Council, the charity responsible, Press Red, is now transferring its programmes to the team at 'Restored'. Press Red has been advocating for change and equipping people to prevent all forms of abuse and violence against women and girls. Restored also speaks up about violence against women and girls as well as equipping the Church to stand against domestic violence and support survivors. There is much to celebrate and give thanks for in all that Press Red has been able to achieve over nearly 10 years. And they wish to take this opportunity to celebrate all who have supported them. Particularly exciting has been the opportunity to make a direct appeal to men to get on board and take a stand alongside women and girls. The charity Press Red will close but thanks everyone who has shared their journey.

\* There is a very real need for the work of Porch Boxes at this time. Please do all you can to contribute. A box is available at the back of both churches and there are lists of the items most needed.

\* Contributions for the magazine are always welcome. Please send to [wrub@live.co.uk](mailto:wrub@live.co.uk) or contact Barbara Taylor or David Robinson. The deadline for the March issue will be 14<sup>th</sup> February, and the magazine will be available on 1<sup>st</sup> March.

## *Not enough windowsills*

The third annual Christmas Tree Festival at Christ Church had the widest variety of trees yet. "We don't have enough windowsills" is a fantastic problem to have. Other positions around the nave were found to display the 22 trees, which were provided by church groups, local businesses, individuals, and our local school, which had the opportunity to see the trees at the Carol Service.



Trees were tiny - and quite large, had lots of branches - and none, were painted, repurposed, recycled, interactive, and several caused one to pause and reflect.

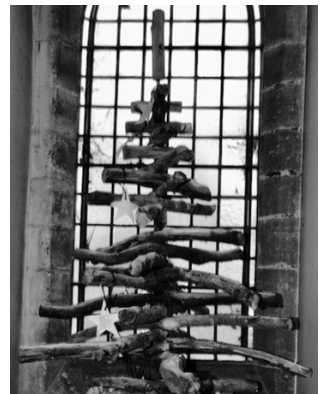
Refreshments were welcome and it was not only the youngest visitors who couldn't leave without completing a puzzle.

Many thanks: to all who planned, assembled, transported, visited, served, stored everything away, cleaned, etc. Thank you to Peter Fish for the photos which can be seen at <https://flic.kr/s/aHBqjCG8NQ>

This was not a fundraising event but thank you to all who donated £175 to Bury Homeless Project.

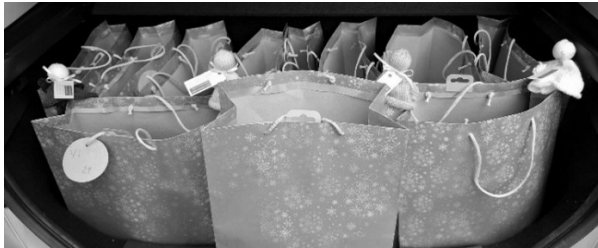
Festival 2026: it is never too soon to begin the planning process!

CCW PCC



Near the end of the Christmas term Barbara Silvester and I were able to join pupils and staff at St John with St Mark's CE School for a special assembly. The 'Open the Book' team is a small group of volunteers which goes to schools around Bury sharing bible stories in a dramatic way. On this occasion we saw how the shepherds received, from God's angel messenger, the news that in Bethlehem had been born a very special baby, who would save the world. We saw the shepherds, and some lambs, go to visit the new family and then to go and share the message they had been given.

Barbara then shared how we came to start knitting angels, and how the book 'Meet the Cast' tells a little more of the story around Jesus' birth, and the visitors who travelled to see him. She explained that we had a book and an angel for each child in school and following the assembly a group of faith ambassadors collected our bags and took them to each class. Tellingly, none of the 385 we delivered have been returned.



A massive thank you to all who knitted, sewed, tied ribbons, added labels, counted and packaged – it needed us all. So, in 2024 and 2025 over 800 angels have been knitted, distributed and carried the message of Christ into the homes of our community. We feel we all deserve a break in 2026. But please don't lose the needles – we are very conscious that there are two more primary schools in our benefice . . . . maybe in 2027??? (And one of the 'Open the Book' team has taken details and a pattern to her own church in the hope they can share the message there too.)

Barbara Taylor

## Quiet Moments for February

---

***We celebrate Candlemas on 2<sup>nd</sup> February and remember Jesus as the light of the world:***

Lord Jesus, You are the Light that shines in the darkness. I thank You for revealing Your love and mercy in my life. As Scripture says, "The light shines in the darkness, and the darkness has not overcome it", remind me daily that Your light cannot be dimmed. Help me to follow Your ways and share Your light with others. May my heart reflect Your truth and love in every action.



*prayerthrive.com*

***8<sup>th</sup> February is Racial Justice Sunday*** – an opportunity to reflect on the importance of racial justice, to give thanks for the gifts and beauty of human diversity, and to commit to end racism and acts of discrimination.

Merciful God,  
you are righteous and love justice:  
stir the hearts of your people that,  
rejoicing in our diversity,  
we may repent of the wrongs of the past,  
and, by your grace, seek the peaceable kingdom of your Son,  
our Saviour Jesus Christ,  
who lives and reigns with you,  
in the unity of the Holy Spirit,  
one God, now and for ever.  
Amen

*churchofengland.org*

***A prayer for the start of Lent (18th February):***



At the beginning of Lent, I remember how Jesus withdrew from his friends and followers, to spend time with you.

Heavenly Father, I also take time away from life's busyness to refocus my heart and spirit. I choose to recentre my life on your Word, your teachings, and ask your Holy Spirit to lead and guide me, filling me

with the hope that is only found in Christ. Thank you for the rich depth of relationship I can have with you. Amen

*compassionuk.org*

***At the time of editing this page, there is much unrest and trouble in the World. Perhaps this prayer for Global Unity and Harmony will help:***

Dear God, we come before You today, humbly asking for Your divine intervention to bring unity and harmony among all nations. Where there is division, sow seeds of peace. Where there is hatred, bring your love and reconciliation. May Your Spirit move in the hearts of leaders and citizens alike to foster understanding and brotherhood. Heal the wounds caused by conflict and prejudice.



Bind us together as one human family, respecting our differences but embracing our common humanity. Help us to be peacemakers, working tirelessly to break down walls of hostility and build bridges of compassion. We ask for your peace to reign from the highest governments to the humblest homes. Guide us, Lord, to live in peace with one another, reflecting Your Kingdom on earth. Amen.

*prayerlit.com*



## ***The Open Group***

---

Thank you to all our regular members who attended the Open Group Christmas gathering on Wednesday 10th December. It was also lovely to be joined by some whom we had not seen for a while due to various circumstances. In a break from tradition, we met during the day for an afternoon tea, which comprised of home-made sandwiches, cakes and scone. Thank you to June for preparing this for us and helping on the day with setting up the table. It wouldn't be an Open Group party without a quiz and this year it was on the theme of 'famous Mary's and Joseph's'. It was nice to end the year with a social get together and a catch up during the busy Advent season. Thank you for the donations on the day and these were given to Bury Cancer Support Centre, which was St. John with St. Mark's chosen Christmas charity for this year.

There is no Open Group in January and February and I will discuss programme and plans for 2026 in due course.

David Robinson

## ***JAM Group***

---

Although we have not been meeting recently, some of our youngsters helped out at the Advent services by lighting the candles on our wreath. We continued to update our Sunday School board at the back of Church with images from the season and our Jesse tree was on display during Christmas as usual. It is also good that Emmy was involved in our worship by reading for us at the Carol service. This prayer below may guide us through the Epiphany season and into Candlemas on 2nd February:



*"Heavenly Father, as we see the many stars in the decorations at Christmas, we are reminded that Jesus is the bright morning star and that when we put our hope and trust in Him, our future is secure. In Jesus' name we pray. Amen."*

2026 is the year Mothers' Union is celebrating 150 years of its existence so there is lots going on: worldwide, in Britain and Ireland, the Province of York, the Diocese of Manchester, the Deanery of Bury and Rossendale (and we shall certainly be taking part in some of these) . . . . so what could we be doing here in Walmersley to make this 150th year special? Ideas are very welcome – speak to any member of the committee.

One thing we are doing at present is inviting everyone to drop in on the 1st Wednesday of each month. January's went well – and the cakes were delicious. Why not come along on 4th February?

There will be no meeting on 18th February, as that is Ash Wednesday.

In January we were delighted to welcome back the Revd Craig Giles who came to celebrate Holy Communion. Craig made it very special by incorporating an emphasis on the new year and all that Mothers' Union will be doing, with covenant prayers as we move into our celebration year. He expressed a wish to return – we shall be happy to invite him again.

Barbara Taylor,  
Branch Secretary

---

### ***CANDLEWAX FOR UKRAINIAN SOLDERS***

---



Last year many of you gave us candle wax to send to the Ukrainian soldiers fighting on the frontline to use for heating, cooking and lighting. Sadly, the war is not over and our wax is still gratefully received. Any unwanted candles or left over wax can be given to Gillian Smith at Christ Church or David Robinson at St. John with St. Mark.

## ***Favourite Psalms – Psalm 46***

Martin Luther wrote a great hymn which was based on this psalm. It was translated from the German into English by Thomas Carlisle. The hymn is *A safe stronghold our God is still*.

The psalm is a celebration of the security of Jerusalem as the city of God. It celebrates God's victorious reign over all the earth. It was once part of the regular worship at the Temple before the exile. There are three stanzas, the first of which (v1-3) was sung either by a choir or the citizens of Jerusalem. The responses or refrains (verses 7 and 11) were also sung by the same people. The worship leader would sing the other two stanzas (v4-6 and 8-10).

The first stanza is a triumphant confession of fearless trust in God, even when everything else seems to be falling apart. Moses had led the people to safety from the clutches of Pharaoh in a dramatic way thanks to God and even if secure structures like mountains and the powerful sea become a danger, they will not defeat God's power to protect them. It is probably imagery of threats from Israel's enemies which God will defeat.

In the second stanza (v4-6) there is a description of God's mighty, sustaining presence in his city. Verse 4 refers to a river making glad the city of God, but if the city is Jerusalem, there isn't a river in Jerusalem. It is more likely to be a metaphor for the continual outpouring of the sustaining and refreshing blessings of God, which make the city of God like the Garden of Eden. The reference to *break of day* in verse 5 will be understood by the people because most enemy attacks occur at daybreak. In verse 6 we have a description of what happens to Israel's enemies when God speaks and acts.

Verses 7 and 11 are the refrain, the people's glad response.

The final stanza (v8-10) forms a declaration of the blessed effects of God's triumph over the nations. In verse 8 *Come and see* is an invitation to see what God has done among the hostile nations. There will be universal peace. God will destroy all means of war. People are asked to be still and know that God has acted on behalf of the people and delivered peace. This, Christians believe, God has done through the birth, life, death, resurrection, and glorification of Jesus Christ but which has still to be brought to complete fruition at his return.

For more information, please refer to *The NIV Study Bible* 1987 Hodder and Stoughton

*The Daily Study Bible: Psalms Volume 1* G.A.F. Knight. Saint Andrew Press.

The psalm version is from *Common Worship: Daily Prayer Psalms Section* (2004) Church House Publishing.

Alan Thew

## **Psalm 46**

- 1 God is our refuge and strength,  
a very present help in trouble.
- 2 Therefore we will not fear, though the earth be moved,  
and though the mountains tremble in the heart of the sea,
- 3 Though the waters rage and swell,  
and though the mountains quake at the towering seas.
- 4 There is a river whose streams make glad the city of God,  
The holy place of the dwelling of the Most High.
- 5 God is in the midst of her;  
therefore, shall she not be removed;  
God shall help her at the break of day.
- 6 The nations are in uproar and the kingdoms are shaken,  
but God utters his voice, and the earth shall melt away.
- 7 *The Lord of hosts is with us;  
The God of Jacob is our stronghold.*
- 8 Come and behold the works of the Lord,  
what destruction he has wrought upon the earth.
- 9 He makes wars to cease in all the world;  
he shatters the bow and snaps the spear,  
and burns the chariots in the fire.
- 10 'Be still, and know that I am God;  
I will be exalted among the nations.  
I will be exalted in the earth.'
- 11 *The Lord of hosts is with us;  
The God of Jacob is our stronghold.*

## Family time

---

🌿 NEW Baby Buddies Group (0–12 months) 🌿 The Buddies Tribe (Empathy Holistic Buddies CIC) is excited to introduce our brand-new Baby Buddies group 💖

✦ Baby massage ✦ Sensory play ✦ Songs, movement & stories

Led by a local mum, sessions are just £5 per week  
or £15 for a 4-week block.

📍 Christ Church Hall 📅 Every Monday 🕒 1.30–2.30pm

Enjoy refreshments, friendship, fun and family time  
– come and find your community, your tribe.

👤💖 All parents, carers, grandparents & childminders welcome!  
👁️ special offer if you have more than one child!

Please contact Emmy to book or for more details!  
[www.empathyholisticbuddiescic.co.uk](http://www.empathyholisticbuddiescic.co.uk)

---

Bury Churches Together would like to thank anyone who supported this year's Toy Appeal, either by donating presents or helping with the organisation and packing. It has been acknowledged that a lot of local Church

members helped with the packing. 220 presents were donated by the public and 130 families were helped. There were also some leftover toys and these were donated to a Children's Hospice in Chorley. The appeal has made a difference to so many people. THANK YOU



2pm, 1<sup>st</sup> Wednesday each month

*bring a friend or come on your  
own and meet new friends*

**Join us, Join in**

**fellowship,  
drinks, cakes**

*EVERYONE is  
welcome*

in the Church Hall,  
School Lane, BL9 5LP

hosted by



---

## **COFFEE MORNING & BOOK FAIR**



**SATURDAY 28th FEBRUARY**  
**from 10.00am until around 12noon**

**ST. JOHN WITH ST. MARK  
CHURCH HALL**

**REFRESHMENTS & CAKES**  
**OTHER STALLS**  
**LOADS OF BOOKS!!**



**ALL PROCEEDS TO CHURCH FUNDS AND ALL WELCOME**

## ***Third Thursday Light Lunch***

---



Come and join us  
on the third Thursday of every month  
for a light lunch.

A chance to enjoy a chat  
in the company of friends.

Lunch is served 12 noon – 1pm.

Christ Church Walmersley Hall, School Lane, BL9 5LP

**There is no charge** – though, if you can  
a donation toward costs would be appreciated.  
Any profit will go to charity or church funds.

***It would be great to see you!***

So come along on 19 February, 19 March, 16 April

thank  
you!

Last week we were finally able to make our first visit to the monthly Thursday Lunch meeting. Peter and I were very impressed with the welcome, the layout and the number of visitors. We enjoyed corned beef hash with beetroot and red cabbage, followed by tiramisu and as many cups of tea as we wanted. Thank you to the wonderful “Thursday Lunch Crew” who make these events possible.

Jill Smith



Tuesday 3<sup>rd</sup> March  
10 am – 12 noon  
Christ Church Hall

Everyone is welcome

---

*CRAFT  
& Chat*

Do you enjoy cross stitching, card making, crochet, scrap-booking, knitting, jewellery making, embroidery, etc, etc?

Would you be interested in a group which meets to enjoy chat, refreshments, mutual support, encouragement, a sharing of skills?

Please let us know if this would appeal to you – we do need to know whether it is viable ([all.ccwalmersleybury@outlook.com](mailto:all.ccwalmersleybury@outlook.com))

---

**ST. JOHN WITH ST. MARK 100 CLUB**

---

**DECEMBER 2025 DRAW WINNERS**

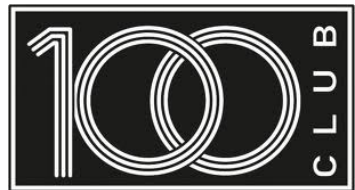
1st Prize £15.00 – (1) Kelly Watson

2nd Prize £10.00 – (75) Clair Smith

**JANUARY 2026 DRAW WINNERS**

1st Prize £15.00 – (1) Kelly Watson

2nd Prize £10.00 – (32) Vicki Robinson



**Congratulations to all**

## REGULAR SERVICES

<b>Sunday</b>			
9.00am	All	Holy Communion (BCP)	Christ Church
10.30 a.m.	1 <sup>st</sup> 2 <sup>nd</sup> 3 <sup>rd</sup> 4 <sup>th</sup>	Holy Communion Family Service Holy Communion Morning Worship	Christ Church
10.30 a.m.	1 <sup>st</sup> 2 <sup>nd</sup> 3 <sup>rd</sup> 4 <sup>th</sup>	Holy Communion Holy Communion Morning Worship Holy Communion	St John w St Mark
10.30 a.m.	5 <sup>th</sup>	Holy Communion	Joint (venue tba)
7.00 p.m.	Final, Sunday @ Seven		Venue tba
<b>Tuesday</b>			
6.30pm	4 <sup>th</sup>	Campfire Church	Christ Church yard
<b>Wednesday</b>			
10.00 a.m.	Holy Communion		St John w St Mark
<b>Thursday</b>			
12.30 p.m.	The Gathering		Zoom
7.30 p.m.	Holy Communion (3rd – Compline)		St John w St Mark
Other services as announced.			
Services are from Common Worship unless otherwise stated.			

If you need transport to church please contact the wardens.

St John with St Mark's Church has Fairtrade status



We are members of the Manchester Diocese Transforming Prayer Community

## ***FOR YOUR FEBUARY DIARY***

---

Sun 1		<b>Presentation of Christ in the Temple</b>
	9.00am	Holy Communion BCP (CC)
	10.30am	Morning Worship (SJM)
	10.30am	Parish Communion (CC)
Wed 4	2.00pm	Join us, Join in (CC Hall)
Sun 8		<b>2nd Sunday before Lent</b>
	9.00am	Holy Communion BCP (CC)
	10.30am	Family Service (CC)
		Parish Communion (SJM)
Sun 15		<b>Sunday next before Lent</b>
	9.00am	Holy Communion BCP (CC)
	10.30am	Morning Worship (SJM)
	10.30am	Parish Communion (CC)
Wed 18		<b>Ash Wednesday</b>
	10.00am	Holy Communion (SJM)
	7.30pm	Holy Communion (CC)
Thu 19	12noon	Thursday Light Lunch (CC Hall)
Sun 22		<b>1st Sunday of Lent</b>
	9.00am	Holy Communion BCP (CC)
	10.30am	Morning Worship (CC)
		Parish Communion (SJM)
	7.00pm	Sunday @ Seven (CC Hall)
Mon 23	8.00pm	Men of the Benefice (Hark to Dandler)
Tue 24	6.30pm	Campfire Church (CC Hall)
	7.30pm	PCC (CC)
	7.30pm	Gravity Denied: Lent Study (Barritt Room)
Thu 26	8.00pm	PCC (SJM)
Sat 28	10.00am	Coffee Morning (SJM)
	5.30pm	Lunar New Year Dinner (CC Hall)

Personal details have been removed in our online edition for data protection purposes.

Please contact us through our websites or social media accounts and we will ensure your message reaches the correct person.

Whilst the Vicar is unwell enquiries about baptisms or weddings / marriage banns etc or any other matter, should be made to the Wardens through our websites or at the parish office which has re-opened each Wednesday evening from 6.30 – 7.00pm at St. John with St. Mark's Hall.

Lots more info on our websites:

<https://ccwalmersleybury.org.uk>

<https://stjohnstmarkchurchbury.com>

Check out Facebook

@christchurchwalmersley

@stjohnstmark

X

@cofewalmersley

Instagram

cofewalmersley

and YouTube

CofE Walmersley

# **SUNDAY @ SEVEN**

***COME AND JOIN US FOR AN HOUR OF  
RELAXED CHRISTIAN WORSHIP AT  
7PM ON THE LAST SUNDAY OF THE  
MONTH.***



***WE NEXT MEET ON FEBRUARY 22ND***

***IN THE HALL AT CHRIST CHURCH  
WALMERSLEY***

***“Let us pray”***

***Lent is upon us – a good time to reflect on our prayer life.***

***If you want to know more ask Nigel Silvester, Ian Banks  
or Cor van der Woude.***

***Also available via Zoom.***

# Lunar New Year Dinner



馬

Year of the  
Horse

Saturday, 28 February 2026

— 5:30 for 6pm —

£10 in support of Church Funds

Soft drinks provided | BYOB

Christ Church Hall, School Lane

— BL9 5LP —

Tickets from 07875 376174